



Bluetooth – Thermal printer



Item no. WT-SLK-TE25

Our new thermal printer is not only extremely innovative but also highly efficient. Compact and wireless. Thanks to its Bluetooth capability using a dongle, you will have more space on your desk.

Modular printer:

- **Bluetooth version: multiple devices can use this multi-channel printer**
- **Basic version with RS-232 connection: one device can be connected to this single-channel printer**

Our new Bluetooth thermal printer outputs test results at the front. Thanks to its compact design, you gain space and can position it almost anywhere. This printer also enables you to print out test and measurement results from several Witschi devices. If you are using older Witschi devices without a USB port for a Bluetooth dongle, this is not a problem. Simply connect your Witschi unit to the printer using an RS-232 cable. Once printed out, the ticket with your measurement results will be cut off automatically (auto cutter).

Highlights:

- Bluetooth (wireless) technology via a dongle
- Just one printer for all your device
- Fast printing speed
- Auto cutter: tickets are cut off automatically
- Connect older Witschi devices via RS-232 interface (one connection possible or several with a switch box)



Technical data

Bluetooth

- with dongle can be used with the Witschi devices
- Chronoscope X1 (G3)
- Chronoscope S1 (G2)
- WATCH EXPERT (from 4th generation / 2016)
- ProofMaster
- ProofMaster CP
- Terminal
- range max. 10 m
- number of lockable devices max. 10 pcs.

Compatible (RS232) with the devices:

- Proofmaster S
- Proofmaster M
- Newtech Handy II
- Analyzer Q1
- Analyzer Q2
- Analyzer Twin
- Watch Expert III
- Chronoscope S1 (G1)
- Chronoscope S1 (G2)
- Chronoscope M1
- Qualimaster

Mains connection

100-240 Vac 50/60 Hz - 24 Vdc / 1,75 A

Reliability

- Print head 60 kilometers paper
- MCBF 60.000.000 lines

Temperature

- In operation from 5~40°C
- storage: from -20 to 60°C

Thermal paper

Width 60 mm

Colour

black

Dimensions

112,5 (W) x 200 (D) x 125 (H) mm

Speed of the thermal printer

max. 200 mm / second

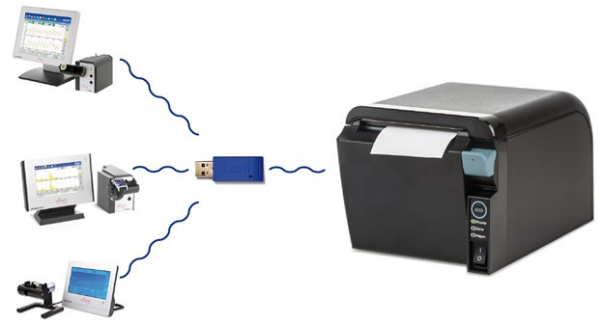
Interfaces

RS232

Bluetooth optional with Art. No. 95.1510

Printer set

Item no.: WT-SLK-TE25/A



Item no.: WT-SLK-TE25/A1



Accessories

RS232 interface change to Bluetooth slot

Item no.: WT-SLK-TE25/SET

Set Dongle and Bluetooth slot for Witschi devices
 "X1 (G3) – S1 (G2) – Expert G4" and printer

Item no.: WT-SLK-TE25/SET1

A set of Dongle and Bluetooth slot for Witschi
 ProofMaster and printer

Dongle for additional Witschi device



Item no.: WT-SLK-TE25/BT900



Item no.: WT-SLK-TE25/BT851



Item no.: WT-SLK-TE25/450-00137

for Terminal