

BRACELET PRESSES

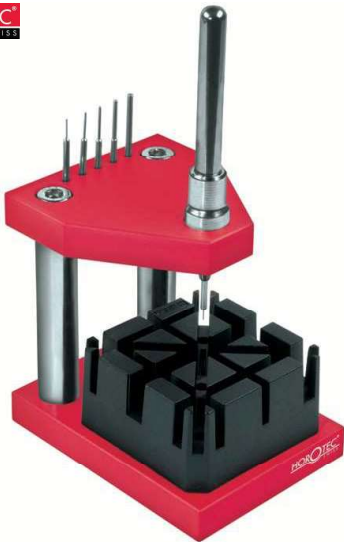


MSA	Size	Kg
10.500	60 x 80 x 110 mm	0.465

Press for rapidly fitting and removing the bracelet pins and screws. Stand accessories easily accessible. The vertical guide allows a perfect alignment with bracelet screws and pins. It is equipped with a device that holds the pins holder, leaving the operator hands free.

Contents :

- 1 press and 1 broach MSA10.500-A
- 1 handle MSA10.504
- 1 bracelet holder MSA10.501
- 12 blades MSA10.502-xxx (2 of each diameter)
- 11 pin punches MSA10.503-xxx : Ø 0.40, 0.60, 0.70, 0.80, 0.90, 1.00, 1.10, 1.20, 1.40, 1.50 and 2.00 mm
- 1 support MSA10.500-C
- 1 lower support MSA10.505
- 1 bracelet protector MSA10.500-E.

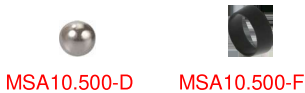


MSA	Size	Kg
10.499	60 x 80 x 110 mm	0.415

Press for fitting and removing the bracelet pins.
Simple version of press MSA10.500.

Contents :

- 1 press and 1 broach MSA10.500-A
- 1 bracelet holder MSA10.501
- 6 pin punches MSA10.503-xxx : Ø 0.40, 0.60, 0.80, 1.00, 1.50 and 2.00 mm
- 1 support MSA10.500-C.



Spare parts for MSA10.499 and MSA10.500 :

MSA	Item	Kg
10.499-03	Centering pin for base MSA10.499, Ø 4 x 17 mm	0.001
10.500-A	Broach for pin punch ; bore Ø 2 mm, length 80 mm	0.021
10.500-B	O-Ring gasket for broach MSA10.500-A (old version) and handle MSA10.504 ; Ø 3 mm, T 1.00	0.001
10.500-C	Support for the bracelet holder MSA10.501	0.003
10.500-D	Steel ball for broach MSA10.500-A and handle MSA10.504	0.001
10.500-E	Delrin® bracelet protector in slotted tulip shape	0.001
10.500-F	Maintaining ring (POM) of ball MSA10.500-D on broach MSA10.500-A	0.001
10.504	Knurled handle for blades MSA10.502-x ; length 84 mm	0.022
10.505	Lower support for blades MSA10.502-x and bracelet protector MSA10.500-E	0.013



MSA	Ø	Kg
10.502-080	0.80 mm	0.004
10.502-100	1.00 mm	0.004
10.502-120	1.20 mm	0.004
10.502-140	1.40 mm	0.004
10.502-160	1.60 mm	0.004
10.502-250	2.50 mm	0.006

Blade for press MSA10.500 (shank Ø 2 mm).

MSA	Quantity	Kg
10.502-A	2x 6 blades	0.006

Assortment of 12 blades for press MSA10.500.



MSA	Ø	Kg
10.503-040	0.40 mm	0.005
10.503-060	0.60 mm	0.005
10.503-070	0.70 mm	0.005
10.503-080	0.80 mm	0.005
10.503-090	0.90 mm	0.005
10.503-100	1.00 mm	0.005
10.503-110	1.10 mm	0.005
10.503-120	1.20 mm	0.005
10.503-140	1.40 mm	0.005
10.503-150	1.50 mm	0.005
10.503-200	2.00 mm	0.005

Pin punches for presses MSA10.499 et MSA10.500 + tools MSA10.510 and MSA10.511 (shank Ø 2 mm).

MSA	Quantity	Kg
10.503-A	11 pin punches	0.060
10.503-B	10 pin punches	0.050
10.503-C	6 pin punches	0.004

Assortment of pin punches for presses MSA10.499 et MSA10.500 + tools MSA10.510 and MSA10.511 (shank Ø 2 mm).

MSA10.503-A : **MSA10.503-B :** **MSA10.503-C :**

MSA10.503-040 MSA10.503-040 MSA10.503-040
 MSA10.503-060 MSA10.503-060 MSA10.503-060
 MSA10.503-070 MSA10.503-070 MSA10.503-080
 MSA10.503-080 MSA10.503-080 MSA10.503-100
 MSA10.503-090 MSA10.503-090 MSA10.503-150
 MSA10.503-100 MSA10.503-100 MSA10.503-200
 MSA10.503-110 MSA10.503-120
 MSA10.503-120 MSA10.503-140
 MSA10.503-140 MSA10.503-150
 MSA10.503-150 MSA10.503-200
 MSA10.503-200



MSA	Size	Kg
10.510	95 x 80 x 36 mm	0.295

Pin punch tool with 1 universal bracelet holder on a wooden base.

Contents :

- 1 pin punch tool MSA10.510-A.
- 1 bracelet holder MSA10.501.
- 10 pin punches MSA10.503-xxx : Ø 0.40, 0.60, 0.70, 0.80, 1.00, 1.10, 1.20, 1.40, 1.50 and 2.00 mm
- 1 wooden base MSA10.510-B.



MSA	Kg
10.511	0.040

Pin punch tool with 1 universal bracelet holder.

Contents :

- 1 pin punch tool MSA10.510-A
- 1 bracelet holder MSA10.501
- 4 pin punches MSA10.503-xxx : Ø 0.40, 0.60, 0.80 and 1.00 mm.



MSA	Length	Ø reaming	Kg
10.510-A	80 mm	2.00 mm	0.029

Metal knurled pin punch tool.

Accessory for MSA10.510 and MSA10.511.



MSA	Packaging size	Kg
10.533	85 x 55 x 15 mm	0.040

Pin punch tool with anodised brass handle and stainless steel anvil.

Contents :

- 1 handle MSA10.527 compatible with all pin punches MSA10.503-x
- 11 pin punches MSA10.503-x : Ø 0.40, 0.60, 0.70, 0.80, 0.90, 1.00, 1.10, 1.20, 1.40, 1.50 and 2.00 mm.

Spare parts :

MSA	Item	Kg
10.503-040	Pin punch Ø 0.40 mm	0.005
10.503-060	Pin punch Ø 0.60 mm	0.005
10.503-070	Pin punch Ø 0.70 mm	0.005
10.503-080	(2) Pin punch Ø 0.80 mm	0.005
10.503-090	Pin punch Ø 0.90 mm	0.005
10.503-100	Pin punch Ø 1.00 mm	0.005
10.503-110	Pin punch Ø 1.10 mm	0.005
10.503-120	Pin punch Ø 1.20 mm	0.005
10.503-140	Pin punch Ø 1.40 mm	0.005
10.503-150	Pin punch Ø 1.50 mm	0.005
10.503-200	Pin punch Ø 2.00 mm	0.005
10.527	(2) Handle, Ø 6 x length 54 mm	0.011



(1)



(2)



MSA	Packaging size	Kg
10.528	85 x 55 x 15 mm	0.037

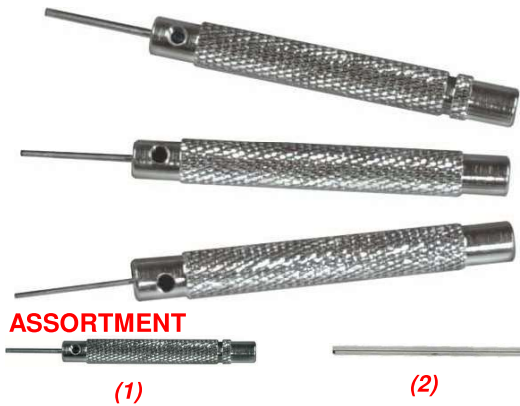
Assortment of pin punch tools for removing the bracelet pins.

Contents :

- 1 pin punch tool MSA10.528-070 with nickel plated brass handle Ø 5 mm, Ø 0.70 mm
- 1 pin punch tool MSA10.528-080 with nickel plated brass handle Ø 5 mm, Ø 0.80 mm
- 1 pin punch tool MSA10.528-100 with nickel plated brass handle Ø 5 mm, Ø 1.00 mm.

Spare parts :

MSA	Item	Kg
10.528-070	Pin punch tool with handle Ø 5 mm, Ø 0.70 mm	0.006
10.528-080	Pin punch tool with handle Ø 5 mm, Ø 0.80 mm	0.006
10.528-100	(1) Pin punch tool with handle Ø 5 mm, Ø 1.00 mm	0.006
10.529-070	Pin punch Ø 0.70 mm, total/usable length 22/15 mm	0.001
10.529-080	Pin punch Ø 0.80 mm, total/usable length 22/15 mm	0.001
10.529-100	(2) Pin punch Ø 1.00 mm, total/usable length 22/15 mm	0.001
10.529-V	(3) Screw for pin punch tools	0.001

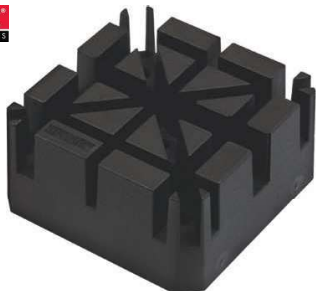


MSA	Kg
10.508	0.029

Assortment of 3 pin punches tools (Ø 0.60, 0.80 and 1.00 mm) for removing the bracelet pins.

Spare parts :

MSA	Item	Kg
10.508-060	(1) Tool with handle Ø 5.20, L52.60, pin Ø 0.60 mm	0.006
10.508-080	Tool with handle Ø 5.20, L52.60, pin Ø 0.80 mm	0.006
10.508-100	Tool with handle Ø 5.20, L52.60, pin Ø 1.00 mm	0.006
10.509-060	(2) Pin punches Ø 0.60 mm	0.001
10.509-080	Pin punches Ø 0.80 mm	0.001
10.509-100	Pin punches Ø 1.00 mm	0.001



MSA	Size	Kg
10.501	52 x 52 x 25 mm	0.022

Universal black plastic bracelet holder, with 9 holes and 8 slots of 2.8 to 6.3 mm.

Accessory for MSA10.499, 10.500, 10.510 and 10.511.



MSA	Size	Kg
10.507	55 x 55 x 40 mm	0.030

Black plastic bracelet holder, 22 slots of 3.5 to 9.0 mm.



MSA	Size	Kg
10.519	50 x 45 x 40 mm	0.105

Bracelet holder vice with screw.

- Maximum bracelet thickness : 10 mm
- Useful dimensions : length 49 mm and height 24 mm
- Suitable for presses MSA10.499 and 10.500 illustrated on page 10-2.



MSA	Size	Kg
10.513	55 x 35 x 22 mm	0.050

Bracelet holder vice with screw.

- Maximum bracelet thickness : 9.50 mm
- Useful dimensions : length 35 mm and height 12 mm
- Suitable for presses MSA10.499 and 10.500 illustrated on page 10-2.



MSA	Size	Kg
10.010	110 x 70 x 75 mm	1.100

Multifunctional 3rd hand vice, case holder and bracelet holder.

Composition :

- 1 base with table equipped with a POM protection Ø 25 mm
- 1 removable and sliding vice for tightening cases and bracelets ; maximum opening 30 mm
- 4 stainless steel blades (hardening 57 HRC) Ø 1.00, 1.40, 1.80 and 3.00 mm. Shank Ø 3 mm.

Spare parts :

MSA	Item	Kg
10.010-100	Blade Ø 1.00 mm	0.005
10.010-140	Blade Ø 1.40 mm	0.005
10.010-180	Blade Ø 1.80 mm	0.005
10.010-300	Blade Ø 3.00 mm	0.005
10.010-A	Maintaining screw	0.010
10.010-B	Blade spring	0.001